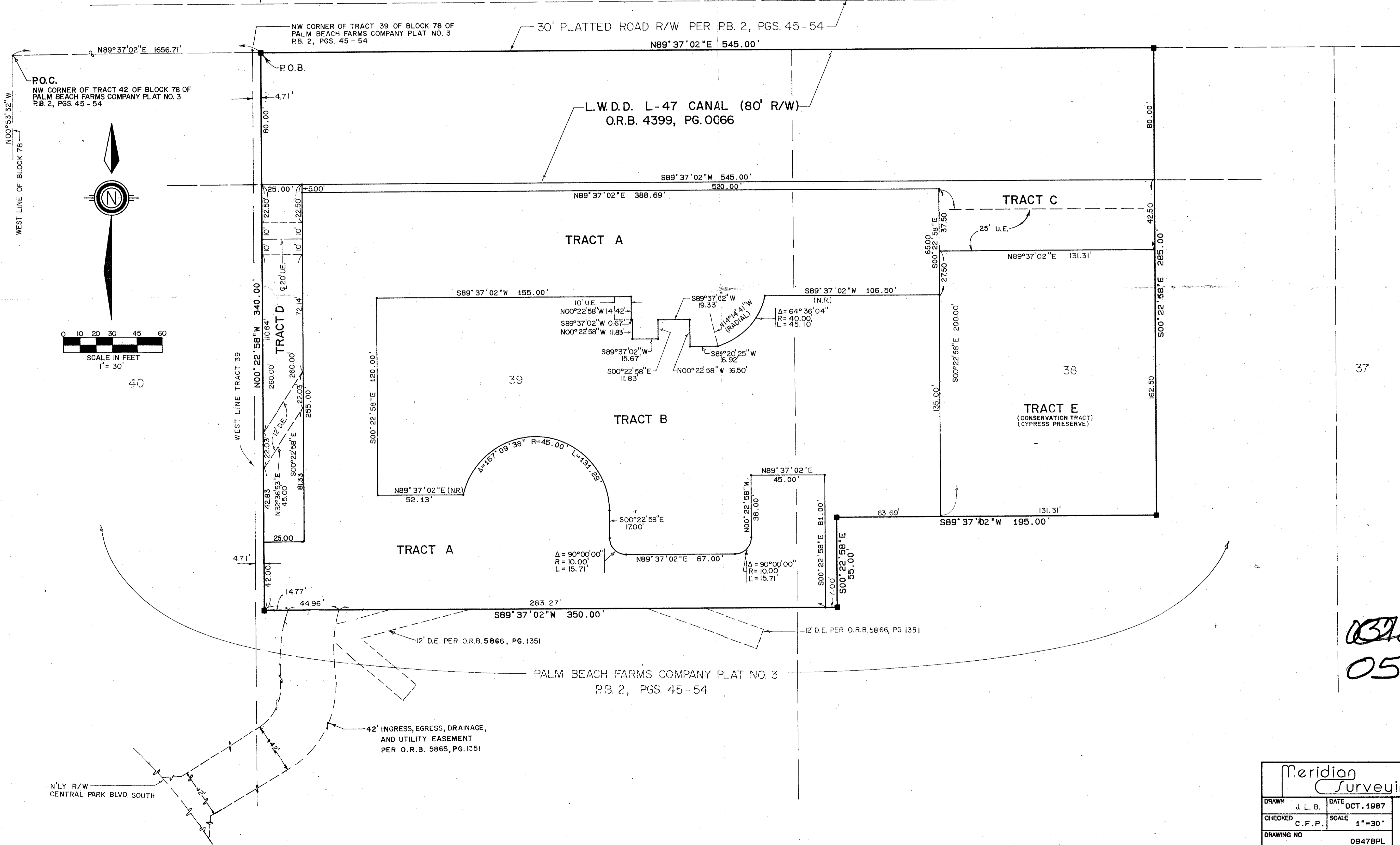


STATE OF FLORIDA
COUNTY OF PALM BEACH
THIS PLAT WAS FILED FOR
RECORD AT _____
THIS _____ DAY OF _____
AD, 1988 AND DULY RECORDED
IN PLAT BOOK _____ ON PAGES
____ AND _____
JOHN B. DUNKLE, CLERK
BY: _____, D.C.

HERITAGE HOUSE
PART OF RAINBERRY PARK P.U.D.
SITUATE IN SECTION 19, TOWNSHIP 47 SOUTH, RANGE 42 EAST, PALM BEACH
COUNTY, FLORIDA, BEING A REPLAT OF A PORTION OF BLOCK 78, OF
THE PALM BEACH FARMS COMPANY PLAT NO. 3 (PB. 2, PGS. 45-54)
SHEET 2 OF 2

17 18 19 20



RM 84-139
TAZ 782

0312 000
0560-001

6/127

| | |
|--|---|
| Meridian Surveying and mapping inc. WEST PALM BEACH, FLORIDA | |
| DRAWN J. L. B. | DATE OCT. 1987 |
| CHECKED C. F. P. | SCALE 1" = 30' |
| DRAWING NO 09478PL | HERITAGE HOUSE PART OF RAINBERRY PARK P.U.D. |

REV. 4-14-88 246 22-08 25-08 25-08 25-08
REV. 6-22-88 346 22-08 25-08 25-08 25-08
REV. 6-22-88 346 22-08 25-08 25-08 25-08